

The image shows the interior of a bus, viewed from the back of the cabin looking towards the front. The seats are blue with a colorful, abstract pattern. Yellow handrails are visible throughout the cabin. The text "Universell utforming" is overlaid in the center in a white, sans-serif font.

Universell utforming

Transportsystemet



Barn

Eldre

Foreldre med barnevogn

Turister

Pendlere

Synshemming

Bevegelseshemming

Hørselshemming

Luftveisproblematikk

Anfallssykdom (epilepsi m.m.)

Fordøyelse- og urinveissykdommer

Utviklingshemming

Psykososiale
funksjonsnedsettelse

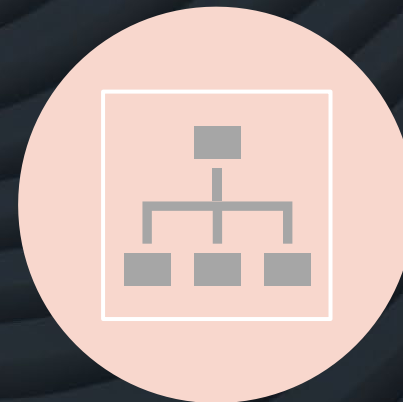
Kognitive funksjonsnedsettelse



FYSISK MILJØ



SOSIALT MILJØ



ORGANISATORISK MILJØ



Standardisering





Informasjon

BANENOR

Vi tilbyr assistanse på stasjonen i forbindelse med din togreise

Bestilles senest 24 timer før avreisetidspunkt.

www.banenor.no/assistanse 47 770 098 assistanse@banenor.no

The advertisement is a vertical poster mounted on a wall. It features a photograph of a person in a high-visibility yellow safety vest using a white cane. The text is in white on a dark blue background. At the bottom, there are three circular icons: a blue one with 'www', a teal one with a telephone handset, and a green one with an envelope. Below each icon is the corresponding contact information.



Informasjon

The photograph shows a large, illuminated poster for an evacuation plan at Nationaltheatret station. The poster is divided into sections with text in both Norwegian and English. It includes a diagram of the station layout with marked exits and escape routes. The poster is mounted on a wall in a dark, tunnel-like environment.

Nationaltheatret stasjon
Evakueringsplan
Evacuation plan

Ved evakuering i en emergency
Evacuation in an emergency

Nødutganger
Emergency exits

Rømningsvei
Escape route

Ved evakuering
In an emergency

- Lytt til høyttalermeldingene
- Bruk merkede rømningsveier
- Gå ned trappene og forlat området raskt

- Pay attention to messages on the public address system
- Use marked escape routes
- Use stairs and leave the area quickly

HJELP.NO

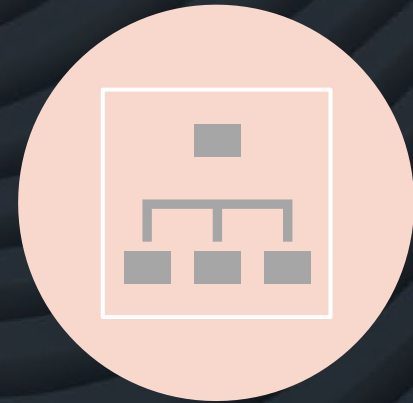
Ambasenterket



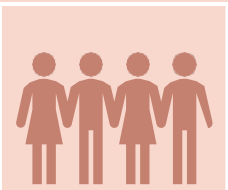
FYSISK MILJØ



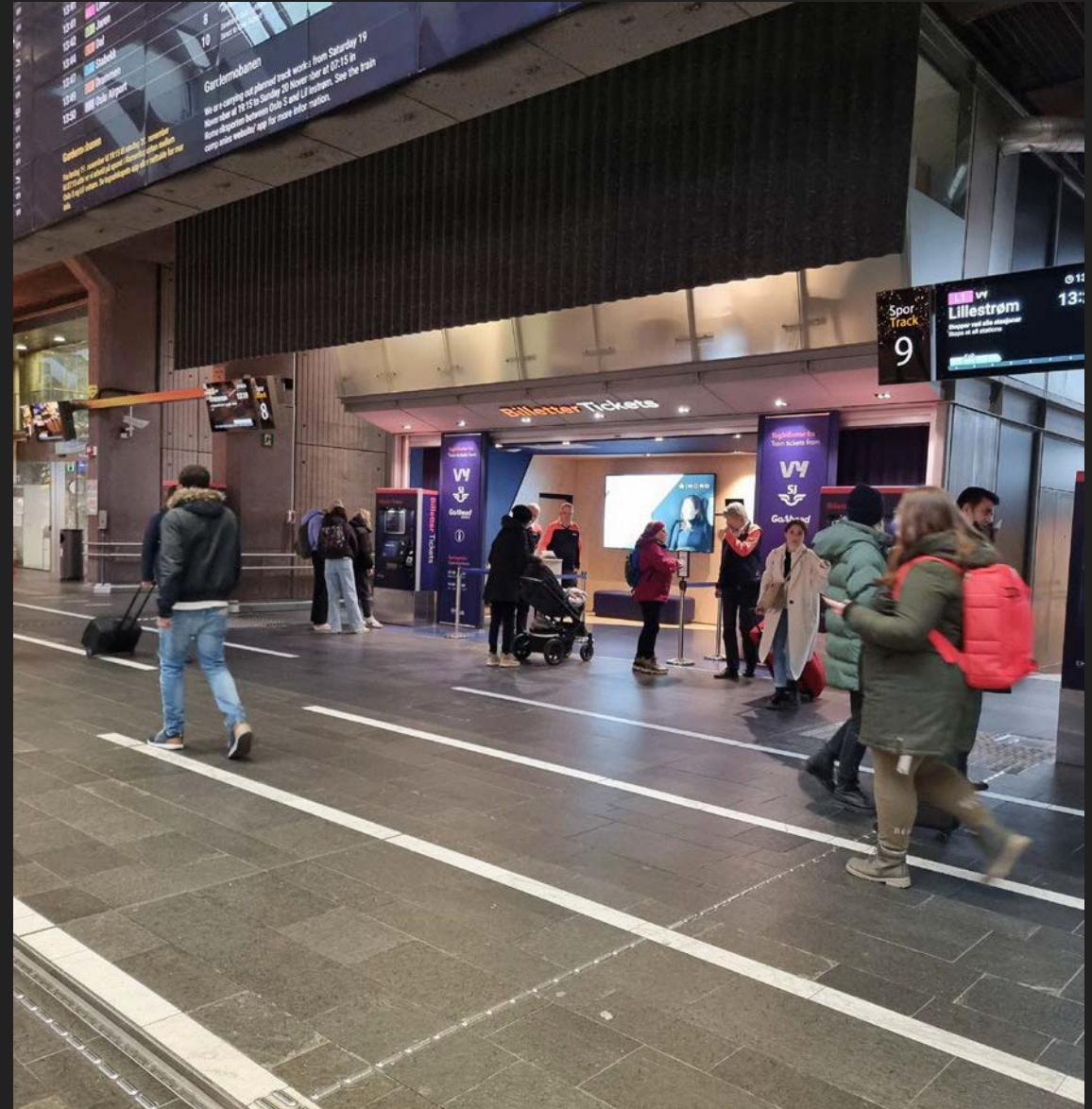
SOSIALT MILJØ



ORGANISATORISK MILJØ



Personell





Medpassasjerer



Not all medical conditions are visible, some of them are hidden

Many conditions are invisible. The "May I Have A Seat Please" lanyard & card will make it easier for you to identify commuters who need a seat.



Transport for All

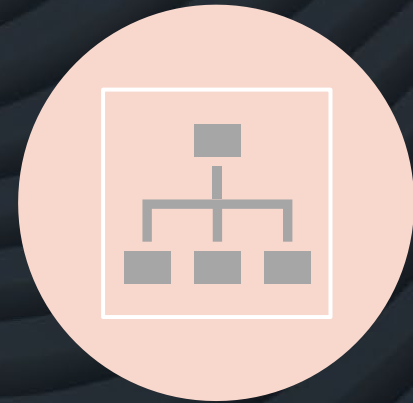
May I have a seat please?



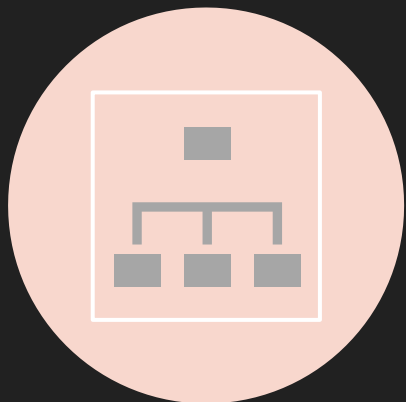
FYSISK MILJØ



SOSIALT MILJØ



ORGANISATORISK MILJØ



Toalett-tilbud

Busselskap må åpne toalettene igjen

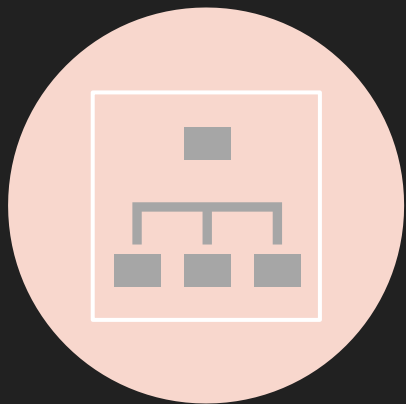
Passasjerer må få bruke toalett på langdistansebusser, viser nytt vedtak fra Diskrimineringsnemnda. Nå åpnes snart toalettene.



Rita Kleven
Journalist

Vi rapporterer fra Trondheim

Publisert 30. sep. kl. 18:14
Oppdatert 2. okt. kl. 17:14



Toalett-tilbud

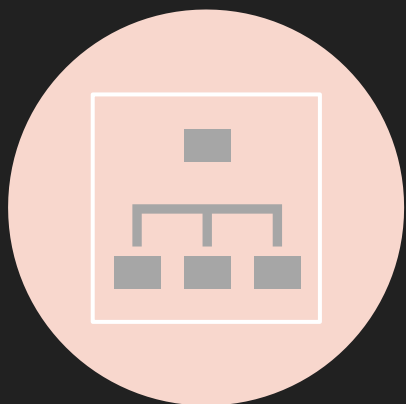
- Sterkt kritikkverdig

- Vi kan ende opp med et samfunn vi ikke vil ha, mener Mage- og tarmforbundet.







DISKRIMINERING: De nye elbussen

DISKRIMINERING: De nye elbussene i Buskerud har satt sinnene i kok. Nå ønsker generalsekretæren en lovendring. Foto: Brakar



Linjetilbud

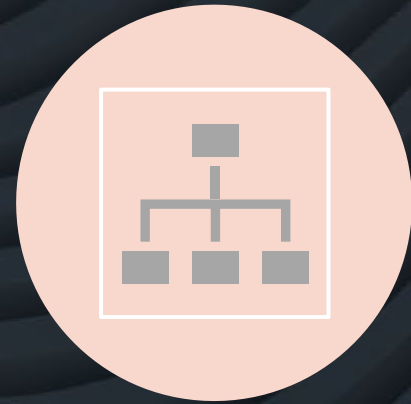
Fra Husebyveien					🕒 40 min	Fra Husebyveien					🕒 35 min
 6	 23	 31	 6			 6	 28 Økern	 7			
17:11	17:17	17:42	17:45	17:51		17:13	17:19	17:41	17:48		
👤 Voksen 39.-					Vis detalier →	👤 Voksen 39.-					Vis detalier →



FYSISK MILJØ



SOSIALT MILJØ



ORGANISATORISK MILJØ